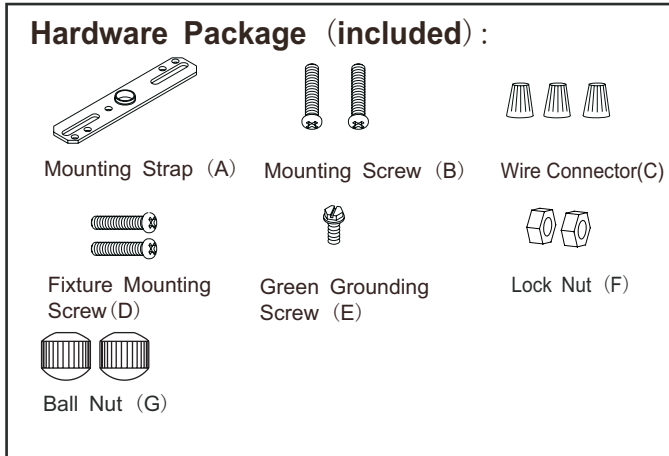


ASSEMBLY AND INSTALLATION INSTRUCTIONS

P0210

WARNING: TO AVOID RISK OF ELECTRICAL SHOCK, BE SURE TO SHUT OFF POWER BEFORE INSTALLING OR SERVICING THIS FIXTURE.

NOTES: 1. Before installing, consult local electrical codes for wiring and grounding requirements.
2. READ AND SAVE THESE INSTRUCTIONS.



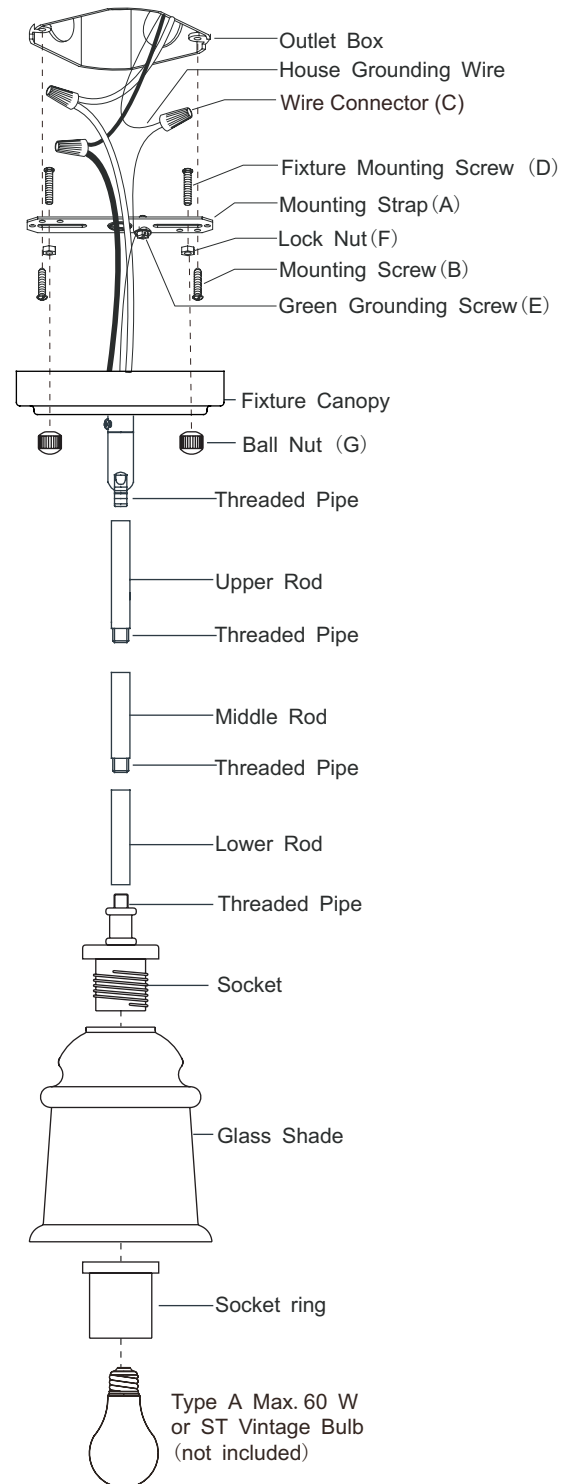
Installation Steps

Turn off the power at fuse or circuit box

1. Thread two fixture mounting screws through the mounting strap, and then secure with two lock nuts. Adjust the length of the fixture mounting screws if necessary.
2. Attach the mounting strap to the outlet box by using two mounting screws.
3. Rod Connections:
 - a. Thread the fixture wire from the fixture through the lower rod, and then secure the lower rod onto fixture using the threaded pipe.
 - b. Thread the fixture wire through the middle rod, and then secure the middle rod onto the lower rod using the threaded pipe.
 - c. Thread the fixture wire through the upper rod, and then secure the upper rod onto the middle rod using the threaded pipe.
 - d. Thread the fixture wire through the fixture canopy, and then secure the fixture canopy onto the upper rod using the threaded pipe.

Note: Length adjustable from 10-1/4" to 55-1/4". Use fewer rods if shorter length is desired.
4. Pull out the source wires from the outlet box. Make wire connections using wire connectors as follows:
 - Connect the smooth-coated wire (marked) from the fixture to the black wire from the power source.
 - Connect the ribbed-coated wire (unmarked) from the fixture to the white wire from the power source.
 - Attach the fixture grounding wire to the mounting strap with the green grounding screw, and then connect it to the house grounding wire with a wire connector.

Carefully put the wires back into the outlet box.

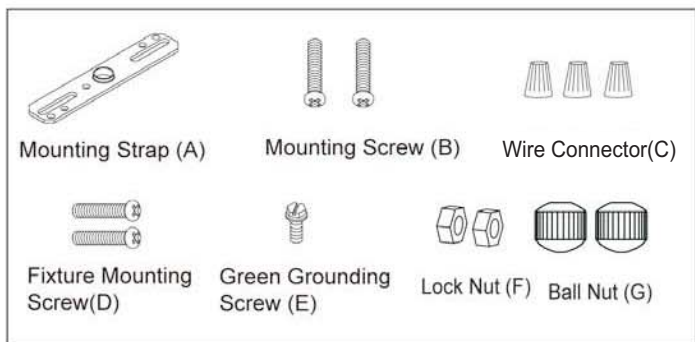


- 5 Attach the fixture canopy to the mounting strap by inserting the fixture mounting screws, and then secure it with two ball nuts.
6. Attach the glass shade onto the socket and tighten the glass shade with the socket ring.
7. Install the bulb (not included). Check relamping label at socket area or packaging for maximum allowed wattage.
8. Angled mounting recommended for a vaulted or angled ceiling. (See Fig. 1)

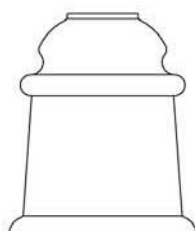
Turn on the power at fuse or circuit box

The following parts are available for re-order if damaged or missing.

Spare Parts List:



Mounting Hardware
5653MM (1 SET)



Glass Shade
9851CB



12" ROD
4644RR

6" ROD
4645RR

3" ROD
4646RR

A: 5-1/4"

B: 55-1/4"

